



BUILD THE FUTURE

Event

Location | Day Month 2024





SOUDAL

A AT A GLANCE

Soudal



SPECIALISTS IN AEROSOLS



KING OF FOAMS



STRONG IN BONDING



WORLD LEADER IN SEALANTS

**Soudal
AT A GLANCE**

Family business



**Founded by
Vic Swerts
in 1966**



**100%
family owned**



**Longterm
growth strategy**

Internationalisation



79

Own affiliates



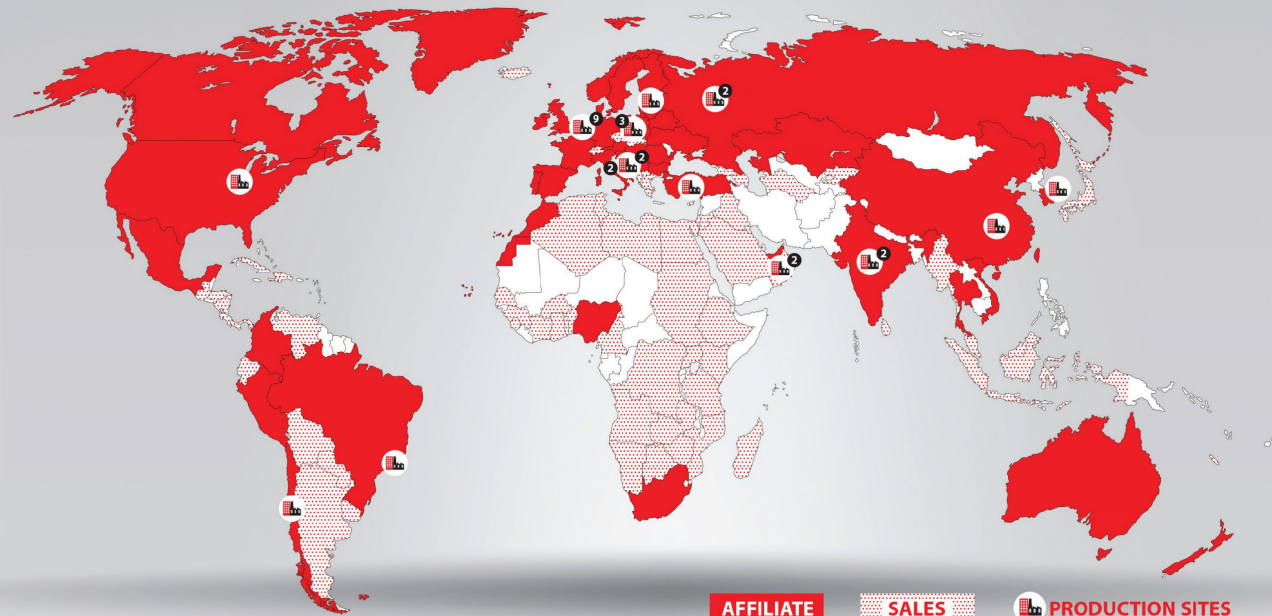
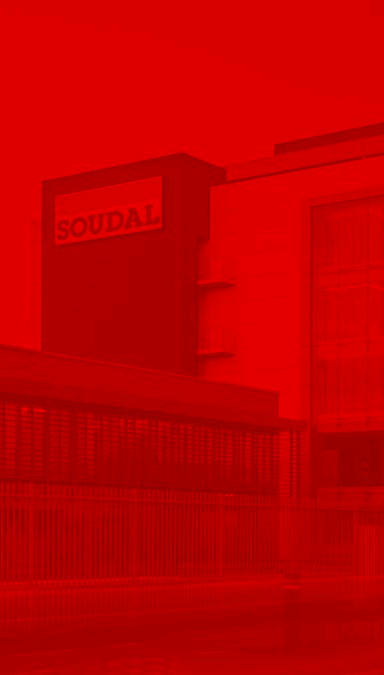
31

Production sites



140

Total countries



AFFILIATE **SALES** **PRODUCTION SITES**

EUROPE

Turnhout (Belgium)

Sealants (Plant 1)
Foams (Plant 2)
Adhesives (Plant 3)
Sealants - Adhesives (Plant 5)

Pelt (Belgium)

Aerosols

Nazareth (Belgium)

Foam systems

Weert (Netherlands)

Adhesives

Bergen op Zoom (Netherlands)

Sealants

Pionki (Poland)

Sealants - Foams (Plant 1)
Adhesives (Plant 2)

Białystok (Poland)

Tapes - Membranes

Srpenica (Slovenia)

Sealants - Foams - Adhesives -
Admixtures

Sežana (Slovenia)

Adhesives

Dobele (Latvia)

Sealants

Istanbul (Turkey)

Sealants

Novomoskovsk (Russia)

Foams

Nогinski (Russia)

Foams

Gournay-en-Bray (France)

Foams

Ghirano (Italy)

Adhesives

Cecchini (Italy)

Adhesives

NORTH AMERICA

Kentucky (USA)

Sealants - Adhesives

SOUTH AMERICA

Santiago (Chile)

Sealants - Adhesives

São Paulo (Brazil)

Sealants

ASIA

Bawal (India)

Sealants

Chennai (India)

Sealants

Shanghai (China)

Sealants - Foams

Seoul (South Korea)

Sealants

Sharjah (U.A.E.)

Sealants - Adhesives - Tapes

Umm Al Quwain (U.A.E.)

Foams - Aerosols

COMPANY

Facts & Figures

TURN OVER

In 2023 € 1,34 Bn.



10% average growth 10Y

SODAL
AT A GLANCE



310 mio
cartridges



130 mio
cans



18.000
SKU's



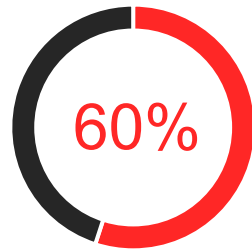
4,115
workforce



29
production sites

Market segments

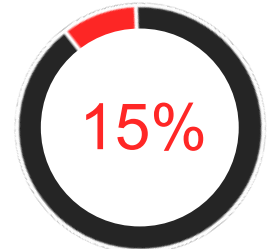
Construction



Retail



Industry

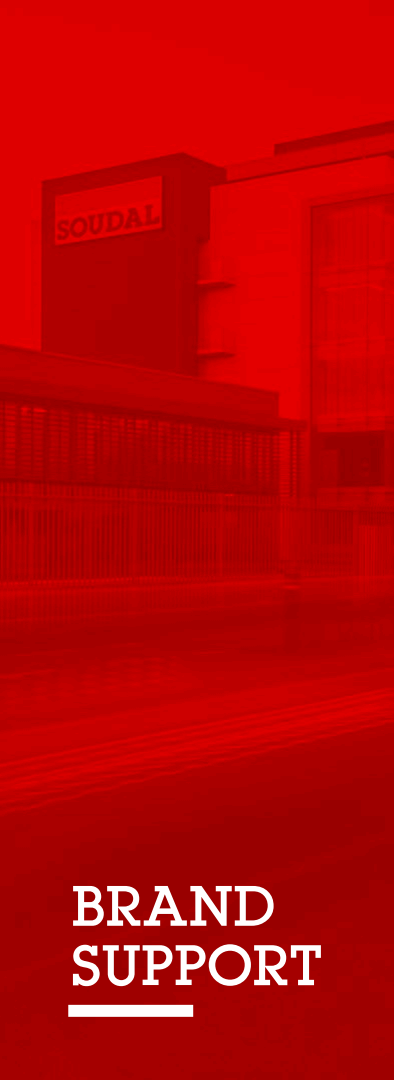


SPONSORING
& EVENTS
Cycling



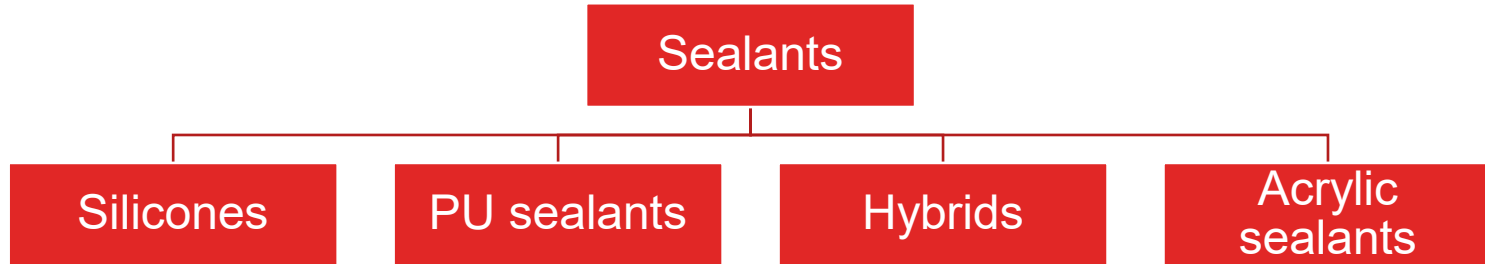
SOUDAL

BRAND
SUPPORT



BRAND SUPPORT

Main Sealant Technologies



SEALANTS

CHARACTERISTICS

- Best known elastic sealant.
- Most consumed sealant among the others.
- Excellent adhesion to many substrates
- Higher resistance than other technologies against UV, ageing & weather conditions
- Better option for sanitary applications and aluminium & glass curtain walls.

APPLICATIONS

Sanitary – Facade – Glazing – Floor applications



NEUTRAL

- Weak elastic, low modulus
- Suitable for expansion joints (facade joints)
- Good adhesion on glass, aluminum and concrete.
- Excellent on aluminium & upvc window profiles.
- Wide range of colors available.
- Not paintable.
- Not suitable on natural stone.
- Oxime: fast curing & skin formation, excellent adhesion, oxime smell
- Alcoxy: slower curing & skin formation, typical alcohol smell



ACETIC

- Tough elastic, high modulus
- Best option for bathrooms and kitchens.
- Acetic smell.
- Excellent anti-mould properties (it contains fungicide).
- No adhesion on concrete.
- Not suitable on natural stone.
- Not paintable.
- Not to be used on lead and copper (acetic acid can attack these materials).
- Anti-fungus
- Indoor applications mainly.



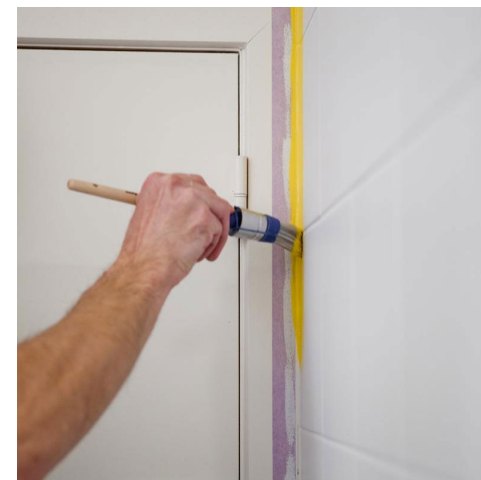
SILICONE
SEALANTS

CHARACTERISTICS

- Excellent paintability: painter's sealant
- Good adhesion on porous substrates and aluminum
- Lower price Vs other technologies.
- Not suitable for outdoor applications.
- Very limited elasticity.
- Higher sound reduction properties Vs other technologies

APPLICATIONS

- Gypsum works, HVAC, door perimeters, general indoor joints.



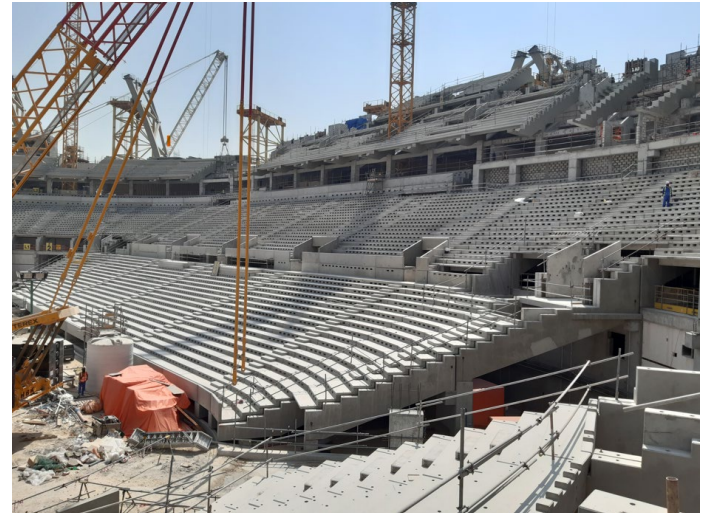
ACRYLIC
SEALANTS

CHARACTERISTICS

- Elastic sealant & adhesive.
- Very good adhesion to concrete & metals.
- Moisture curing

APPLICATIONS

- Concrete joints
- Bonding and sealing in automotive and industrial applications.
- Car parks, warehouses, public areas.



PU
SEALANTS

CHARACTERISTICS

- Sealing & Bonding.
- It combines the properties of silicones, PU's and acrylics.
- “The newer technology”
- Very good adhesion to a variety of substrates.
- Waterproof, paintable and good UV resistance.
- Fast curing and strong initial tack.

APPLICATIONS

- All general bonding works and building repairs.



HYBRIDS

Soudal



FIND THE RIGHT FIX ALL[®] PRODUCT FOR YOUR APPLICATION!



ALL BONDING AND SEALING

FLEXI



CRYSTAL



HIGH TACK



ALL BONDING

HIGH TACK INVISIBLE



X-TREME POWER



X-TREME POWER EXPRESS



TURBO



ALL Materials (except PE, PP, PTFE)	★★★★★	★★★★★	★★★★★	★★★★★	★★★★★	★★★★★	★★★★★
Sealing	★★★★★	★★★★★	★★★★★				★★
Bonding	★★★	★★★	★★★★★	★★★★★	★★★★★	★★★★★	★★★★★
Initial Grab	★★	★★	★★★★★	★★★★★	★★★★★	★★★★★	★★★
Strength build up/ fast bonding	★	★	★★	★★	★★	★★★	★★★★★
Crystal Clear/ Invisible		★★★★★					
Applications	Flexible sealing & bonding. All applications where superior flexibility is required.	Crystal clear sealing & bonding. Perfect for use on transparent materials.	All bonding and sealing applications. Ideal for when a high end strength is required.	Invisible bonding especially for applications where a high end strength is required.	All heavy bonding where an extremely high initial tack is required.	All heavy duty bonding where both speed and extreme strength is important.	Super fast bonding for when speed and strength is important.
Colors							

Fix All Flexi, Crystal, High Tack & Turbo also available in 125ml tubes, 400ml and 600ml foil packs.

HYBRIDS
FIX ALL

All you need is... **Fix ALL[®]**.

Soudal



FIND THE RIGHT FIX ALL® PRODUCT FOR YOUR APPLICATION!



ALL BONDING AND SEALING

FLEXI



CRYSTAL



HIGH TACK



ALL BONDING

**HIGH TACK
INVISIBLE**



X-TREME POWER



**X-TREME POWER
EXPRESS**



TURBO



ALL Materials (except PE, PP, PTFE)	★★★★★	★★★★★	★★★★★	★★★★★	★★★★★	★★★★★	★★★★★
Sealing	★★★★★	★★★★★	★★★★★				★★
Bonding	★★★	★★★	★★★★★	★★★★★	★★★★★	★★★★★	★★★★★
Initial Grab	★★	★★	★★★★★	★★★★★	★★★★★	★★★★★	★★★
Strength build up/ fast bonding	★	★	★★	★★	★★	★★★	★★★★★
Crystal Clear/ Invisible		★★★★★					
Applications	Flexible sealing & bonding. All applications where superior flexibility is required.	Crystal clear sealing & bonding. Perfect for use on transparent materials.	All bonding and sealing applications. Ideal for when a high end strength is required.	Invisible bonding especially for applications where a high end strength is required.	All heavy bonding where an extremely high initial tack is required.	All heavy duty bonding where both speed and extreme strength is important.	Super fast bonding for when speed and strength is important.
Colors							

Fix All Flexi, Crystal, High Tack & Turbo also available in 125ml tubes, 400ml and 600ml foil packs.

HYBRIDS
FIX ALL

All you need is... **Fix ALL®**.

CHARACTERISTICS

- Market leaders in the production of one-component PU foams.
- Filling gaps and cavities.
- Self expanding.
- Therman and acoustic insulating properties.
- Higher sound reduction properties Vs other technologies

APPLICATIONS

- Door and window filling perimeters.
- Sealing all openings on roofs.
- Good adhesion to almost all surfaces



CHARACTERISTICS

- Adhesives available for a wide variety of applications.

APPLICATIONS

- General bonding in construction industry.
- Adhesives for bonding wooden flooring, marble, carpet, vinyl, artificial grass, mirrors, upholstery, carpentry works, etc.



GO FOR **GREEN**
CHOOSE GREY



ADHESIVES

SOUDAL

LUBRICATE &
PROTECT



CLEAN &
DISINFECT



INDUSTRIAL
APPLICATIONS



TECHNICAL
AEROSOLS



CHEMICAL ANCHORS

- Securing and reinforcing pressure on heavy load.
- Two main technologies: Polyester & Vinylester

POLYESTER

- Tough elastic, high modulus
- Standard chemical anchor
- Light to medium loads
- Shrinkage
- Fast curing.
- With/without styrene.



VINYLESTER

- Also called epoxy acrylate or methacrylate
- Heavy loads & better mechanical properties.
- Styrene free
- Less shrinkage
- Can be used on damp surfaces and sometimes under the water.



CHEMICAL
ANCHORS



SOUDAL

BUILD THE FUTURE

